

Batch Capturing with EDIUS



www.canopus.com
www.grassvalley.com

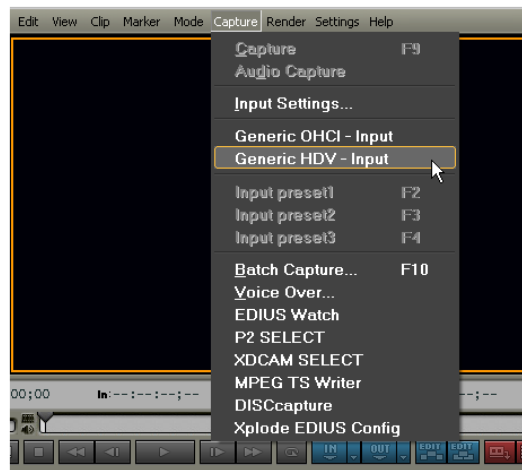
Batch Capturing with EDIUS

One of the three main capture modes that EDIUS supports is Batch Capturing. Operating off a list of In and Out points corresponding to videotape, EDIUS can precisely capture footage from HDV and DV devices. EDIUS SP, EDIUS SD* and EDIUS HD* can also batch capture from analog equipment via the RS-422 protocol.

* With the Multi-I/O processor unit

The process of creating and executing a Batch capture list from any of these devices remains the same.

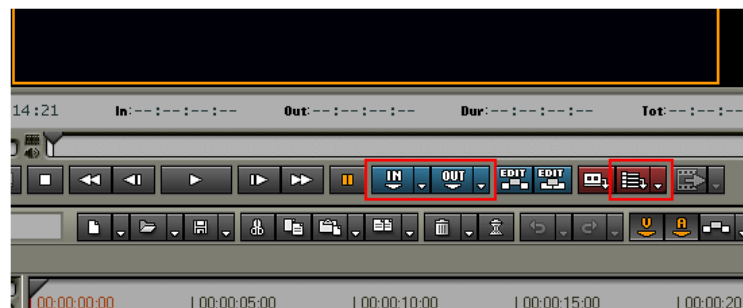
The first step is to connect the video camera or deck to the EDIUS system, and choose the associated input device from the Capture menu, located at the top of the Monitor Window.



The various playback control buttons should become accessible once EDIUS switches input to the chosen device. Using these controls, cue up the start (In point) of the first clip that is to be added to the batch capture list and then click the blue [IN] button.

Cue the end of the first clip to be added to the list and then click the blue [OUT] button.

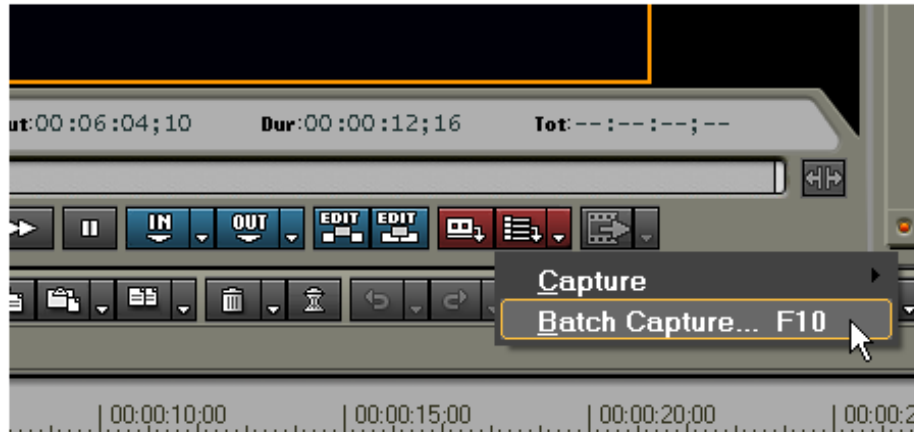
To finally add the clip's In/Out information to the batch capture list, click the red [Add to Batch Capture] button.



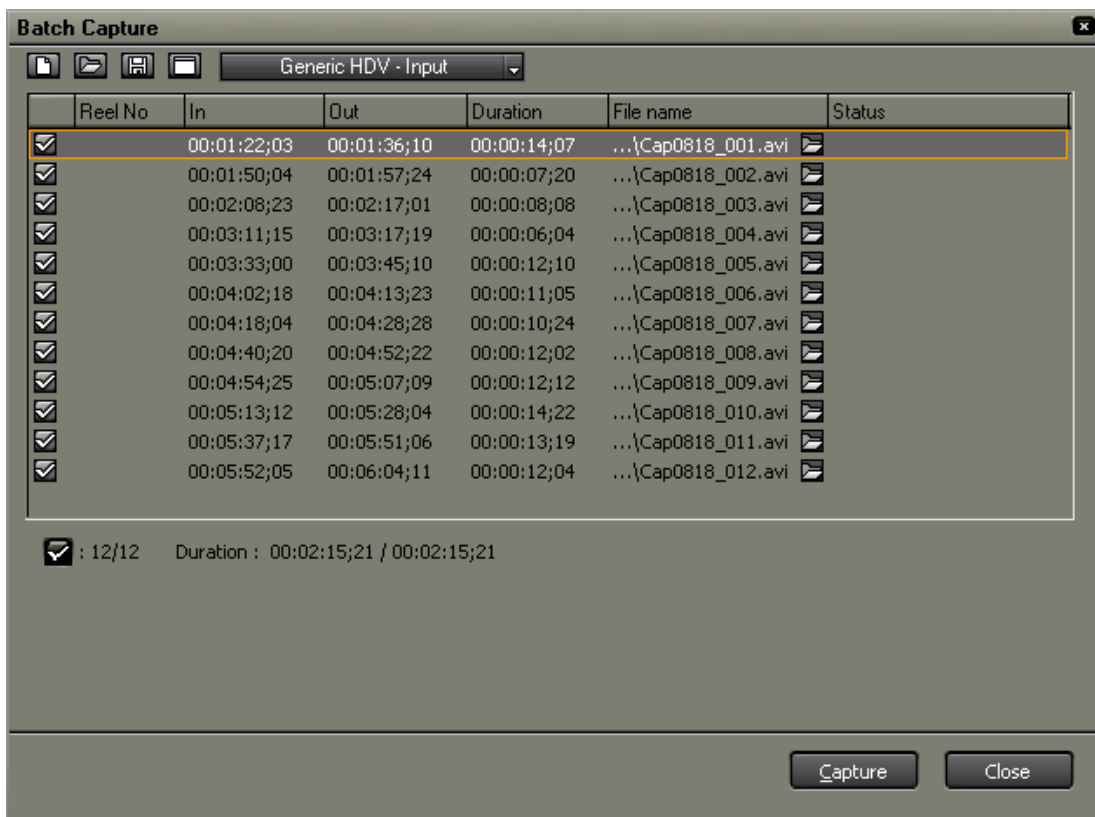
Repeat these steps for any other section of footage that is to be captured via the batch capture list.

Tip: Using the keyboard shortcuts for setting In points, Out points and adding to the capture list, can speed up the list creation process. By default, the "I" key sets an In point, the "O" key sets an Out point and pressing "Ctrl" + "B" will add the current In and Out points to the batch capture list.

After adding pairs of In/Out points to the list, click the drop-down button of the red [Add to Batch Capture] button and choose [Batch Capture].



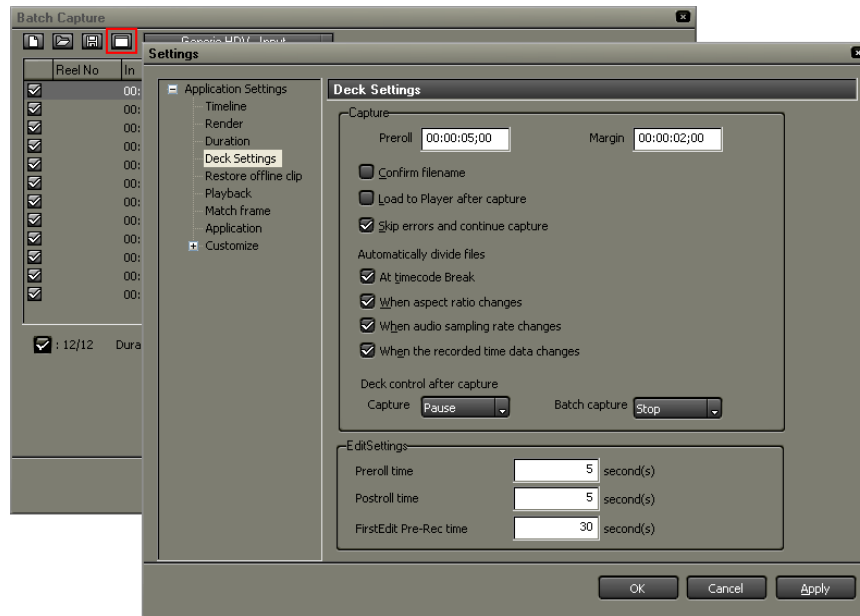
The Batch Capture window will be displayed.



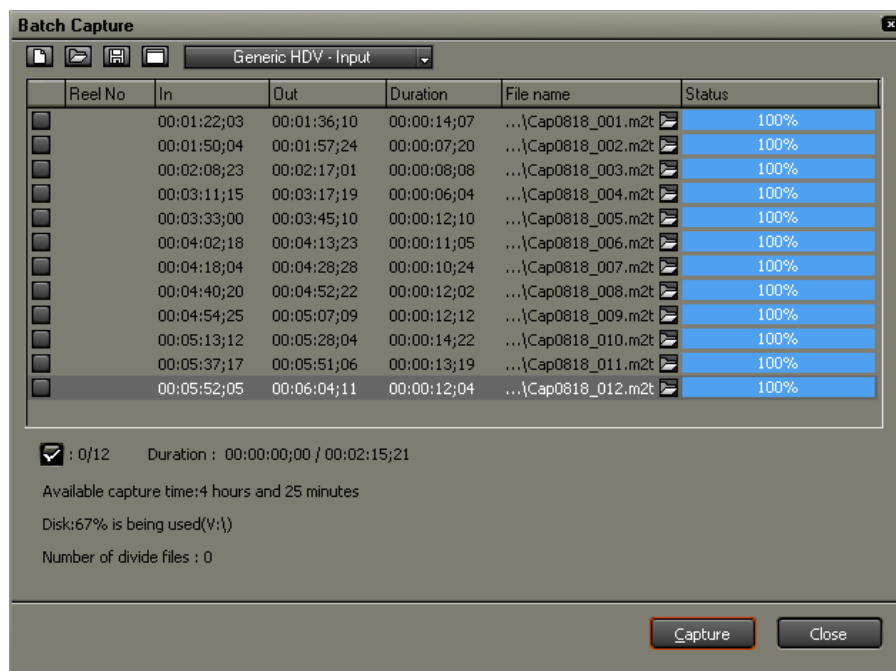
The Batch Capture window offers a number of useful functions for further refinement of the list just created, or for altering lists that have been created in the past.

Items that can be altered include enabling/disabling capture of any clip, changing the order that clips are captured, In/Out/Duration values and the Folder/File name for captured clips.

By default, EDIUS is set to automatically split captured footage into a new clip whenever it detects a date, timecode or aspect ratio change. Since this is normally not desirable when batch capturing, it is a good idea to ensure that these options are disabled. Click the [Show the setup dialog] button at the top of the Batch Capture window to bring these options up.



To start the batch capture process, click the [Capture] button. EDIUS will automatically control the connected video device and capture footage according to the list. The Batch Capture window records the progress of each clip as it is captured, and once any clip is finished being captured it is added to the Bin window.



If the capture list is to be reused at a later time, click the [Save capture list] button. Otherwise, click [Close] to be returned to the main EDIUS interface.